



## Introducing Our New Mobile Inspection App: Streamlining Inspections for Local Government

*IHTMaps* is a new browser-based inspection form system to enable inspectors to inspect properties, firebreaks, gates, water tanks, and other items, using a laptop or tablet in the field.

*IHTMaps* includes an easy-to-use mapping system, which can be used on internet connected devices and a 4G or 5G connection, such as a laptop or tablet. Future versions will support an offline mode when an internet connection isn't available.

Inspection Forms are the heart of *IHTMaps* and can be customised to your inspector's workflow. Existing paper or electronic forms can be converted to digital forms. Controls such as text boxes, checkboxes, and date pickers speed up the data entry process when filling in the form on site.

1 Edit Gate Inspection #1

2 Inspection Details Photos

Status

Overdue  Due  Outstanding  Completed  New Gate

Captured / Inspected By

Matt  John  Lisa

Work

Work Required

Work Required Details

Due Date

Work Completed

Inspection Date

4 Save 5 Delete Cancel

### Photos

Inspections can have multiple photos attached with comments as evidence of the inspection. The photos can be taken with the device's built-in camera or uploaded from a digital camera.

1 Edit Gate Inspection #1

2 Inspection Details Photos

3 Photos

4 Choose files 2 files

Gate 1 Gate 2

Save Delete Cancel

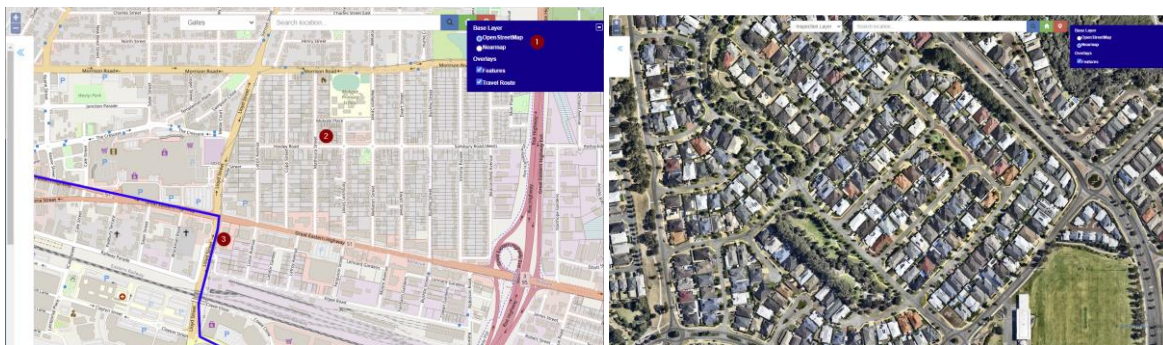


## User Friendly Interface

*IHTMaps* has an easy-to-use interface based around a toolbar:



1. **Inspection Layer** – selects the type of inspection form you wish to use, such as Gates, Water Tanks, or Firebreaks. We customise the inspection form to your requirements and convert your paper forms into electronic forms.
2. & 3. **Location Search** – searches the map to find addresses and features.
3. **Home** – jumps to a configurable “home view”, such as a particular local government area.
4. **GPS** – centres the map on the current GPS location, allowing you to view exactly where you are on the map when out in the field.
5. **Layer Control** – the map has a background or base layer, upon which the markers, lines, or polygons, for each item being inspected are displayed on.



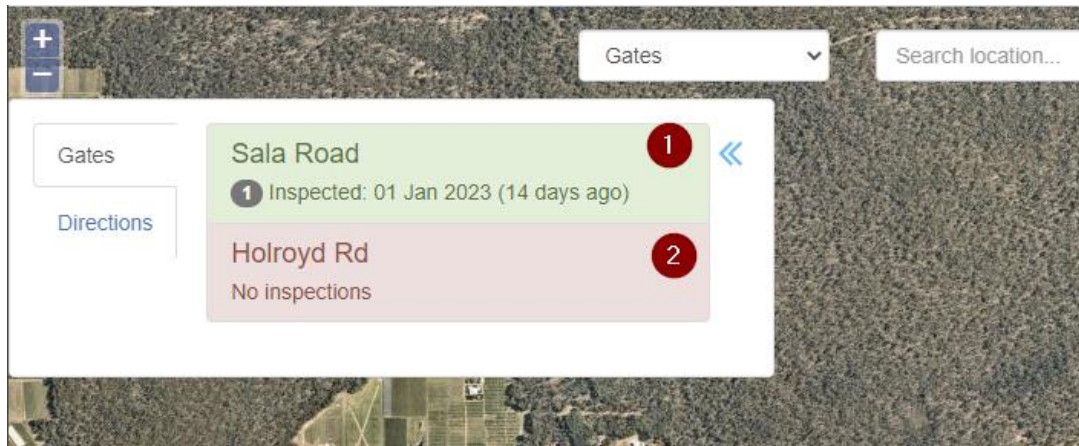
The base layer can come from any source of Tile Maps such as:

- **Nearmap** - a subscription service of very high resolution aerial photographs updated regularly. The maps are of such high resolution that individual features of properties may be picked out.
- **Google Maps** - Google Maps can be used as a base map with a subscription from Google. Google Maps includes streets, street names and numbers, and the outlines of buildings.
- **OpenStreetMap** - a free source of street data much like Google Maps but without street numbering.
- Any other source of tile maps such as other GIS applications like ESRI or generated from high-resolution aerial photographs.



## Inspection List

The inspection list shows the items on the map to be inspected for the current view. Items that have been inspected in the last 6 months are in green, items that haven't been inspected in the last year are shown in orange, and items that haven't been inspected are red. The corresponding features on the map are also displayed in these colours. (The exact cut off dates for the colours can be configured)



The inspection list can also be used as a dashboard to view how far through the inspection process the inspectors currently are.

## Integrating IHTMaps

IHTMaps uses a Spatial Database to store the inspection data. This data can be integrated or synced with existing database or GIS systems. Inspection data can be imported from spatial files such as Shape Files.

IHTMaps can be hosted in the cloud with Azure or AWS or hosted on-prem on a standard web server.

---

## Call to Arrange a Demonstration

We can come to your location and demonstrate our new inspection system with a hands-on demo and answer any questions.

Call Matthew Lock at Industrial Hypertext on **0411 466 589** to book a demonstration.

### Email

info@industrialhypertext.com

### Web

<https://www.industrialhypertext.com>

### Post

Industrial Hypertext, PO BOX 246, Subiaco, WA 6008